

A PROJECT BY

TRIDENT LANDMARKS

PRESENTING,  
**HOMES THAT OPEN**  
UP TO SO MUCH MORE



**SHIV KRUPA**

"Home isn't a place, it's a feeling"



## PROJECT AMENITIES



High Ceilings & Branded  
Solar Water Heater



Branded Fit-outs



CCTV For  
Common Areas



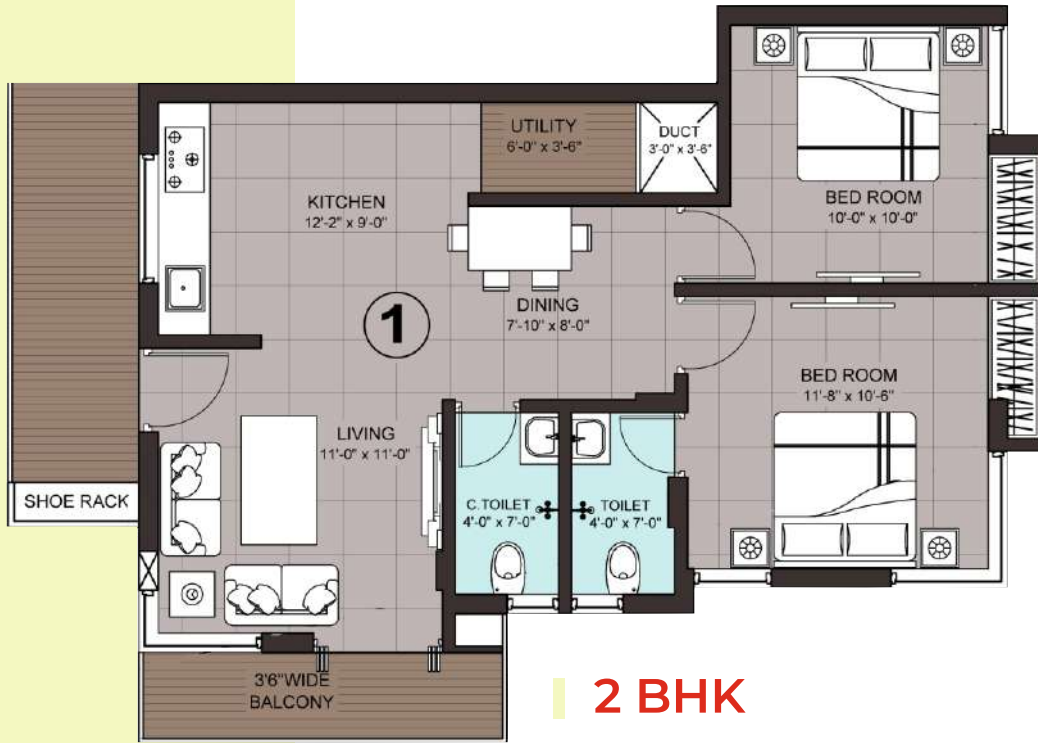
Covered Basement  
Parking

PRM/KA/RERA/1249/447/PR/270922/005271

## PROJECT FEATURES

- Superior Construction Quality
- Loan From Major Financial Institutions
- Close Proximity To KLES And JNMC
- Vaastu Compliant
- Good Investment Option For Rental Income
- 24 X 7 Water Supply





**2 BHK**

Saleable Area – 1,100 sft

FLAT NOS. 101, 201, 301, 401

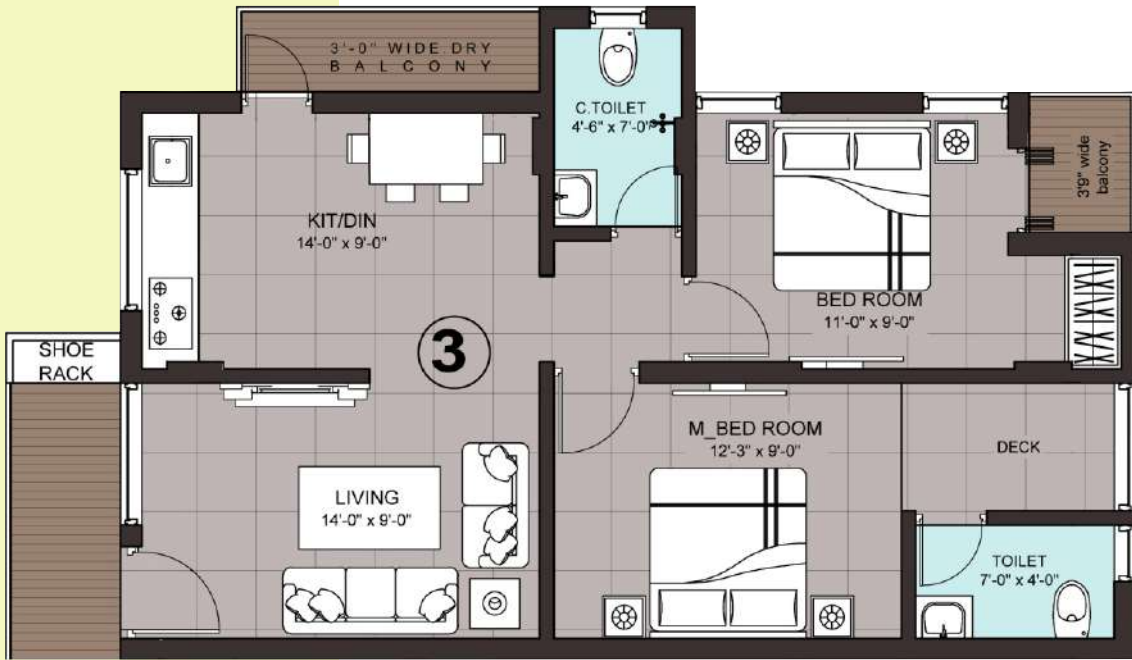


**1 BHK**

Saleable Area – 630 sft

FLAT NOS. 102, 202, 302, 402

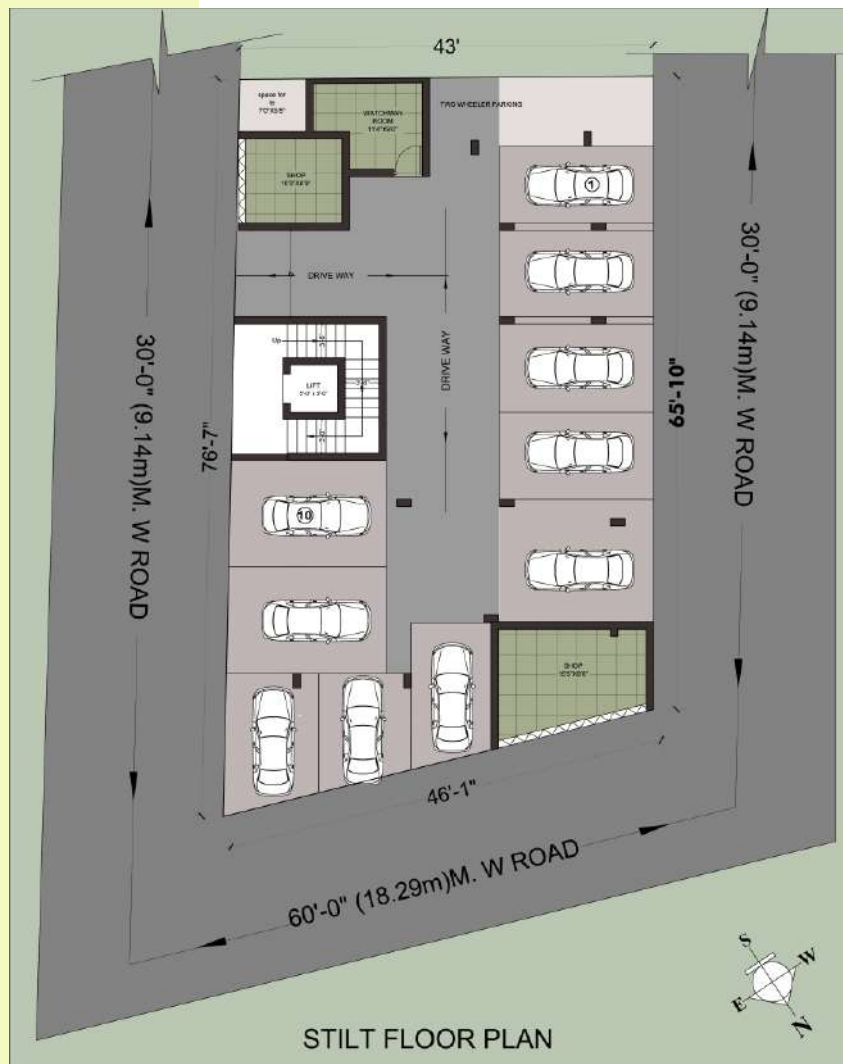




## 2 BHK

Saleable Area – 1,000 sft

FLAT NOS. 103, 203, 303, 403



STILT FLOOR PLAN

## Stilt Floor Plan

## OUR COMPLETED PROJECTS IN BELAGAVI



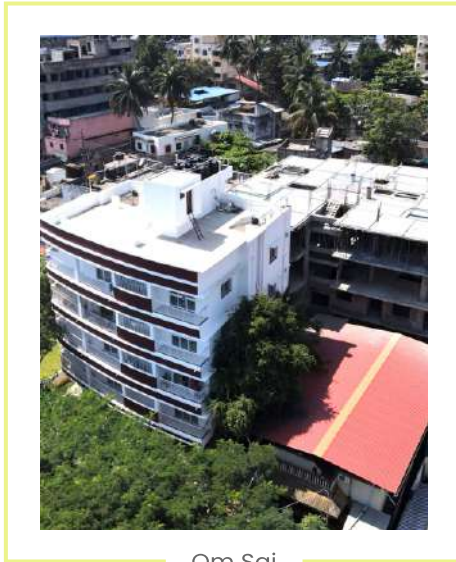
Shiv Sai



Northstar



Royale Arch



Om Sai



Sai Siddhanth

A PROJECT BY

**TRIDENT LANDMARKS**

### Site Address :

CTS No. 1510 Opp. Basav Temple, Basava Colony, Behind KLE Hospital, Off. Bauxite Road, Belagavi

### Office Address :

Trident Landmarks, CTS No. 2202, Bhai Dajiba Desai Colony, Double Road, 2nd Stage, Hanuman Nagar, Belagavi

### Contact Details :

9731621599 / 9892500890

**Architect :** Ajit Patil

**Legal Advisor :** Ms. K. M. Hirmath

**Structure Engineer :** Vinay Behere